

Fire Department Village Board Report Narrative

Month: April 2015

Activities for the Month: The 18 activities for the month included meetings, equipment and station maintenance, records management, work details and trainings.

Training:

- Hose deployment
- Safety Training
- Firefighter endurance
- Blood born pathogens
- County officer training
- Standard Operating Guidelines
- MPO apparatus operations

Projects and other events:

- Junior Guild Auction winner ride to school
- Storm Ready Display in the Library display case

Calls for Service: There were 6 calls for service comprised of: 1 Mutual Aid Call to the Town of Brookfield, 4 automatic false alarms; 2 alarm malfunction, 1 caused by shower steam and 1 by cooking/burnt food, and 1 vehicle accident.

Year to date the calls for service were, 4 calls behind and 4 false alarms ahead compared to last year.

Respectfully Submitted,

William L. Selzer
Fire Chief, Elm Grove Volunteer Fire Department

Elm Grove Fire Department Activities for Month							Month:	Apr-15
Activity No.	Activity Date	Day of the Week	Activity Time	Activity Hours	Type of Activity	Description of Activity	Members Attended	Man Hours
1	4/1/15	Wednesday	10:15	0.3	Public Relations	Storm Ready Display	1	0.25
2	4/1/15	Wednesday	18:30	2.0	Meeting	County Training Officers	1	2.00
3	4/3/15	Friday	13:00	0.5	Work Detail	Setup for Tuesday Drill	1	0.50
4	4/4/15	Saturday	15:20	2.4	Database	Records Maintenance	1	2.42
5	4/5/15	Sunday	7:15	1.3	Database	Records Maintenance	1	1.25
6	4/5/15	Sunday	19:30	1.5	Database	Records Maintenance	1	1.50
7	4/6/15	Monday	7:00	0.8	Training	Blood Born Pathogens	12	9.00
8	4/6/15	Monday	7:45	3.0	Training	Day Drill - Safety Topics	12	36.00
9	4/6/15	Monday	23:00	1.8	Database	Records Maintenance	1	1.75
10	4/7/15	Tuesday	19:00	0.8	Meeting	Monthly Department Business Meeting	19	15.77
11	4/7/15	Tuesday	20:00	1.0	Meeting	Officer Meeting	6	6.00
12	4/14/15	Tuesday	19:00	3.0	Training	Firefighter Endurance	13	39.00
13	4/15/15	Wednesday	7:00	1.0	Training	Hose Deployment	6	6.00
14	4/16/15	Thursday	17:00	5.0	Training	MPO Class	1	5.00
15	4/21/15	Tuesday	19:00	2.5	Drill	Standard Operating Guidelines (SOG)	22	55.00
16	4/23/15	Thursday	17:00	5.5	Training	MPO Drafting	1	5.50
17	4/28/15	Tuesday	19:00	2.5	Training	Hose Deployment	22	55.00
18	4/28/15	Tuesday	19:45	1.3	Public Relations	Kids To School	1	1.25
							Total Activity Man Hours for the Month	243.19
Department Activity Summary and Statistics								
Monthly	Year to Date	Month Act.	Av. Hours		Year to Date	Monthly Activity	Year to Date	Year to Date
Activities	Activities	Hours	per Activity		Activity Hours	Attendance	Attendance	Man Hours
18	68	36.0	2.00		138.1	122	572	1083.54
Elm Grove Fire Department Calls for Service for Month								
Call No.	Date of Call	Day of Week	Time of Call	Hours Out	Type of Alarm	Alarm Description and Incident Address	Members Responded	Members Man Hours
1	4/10/15	Friday	18:10	0.88	Vehicle Accident	Elm Grove Rd. & Bluemound Rd.	17	14.96
2	4/11/15	Saturday	11:12	0.15	Mutual Aid	Town of Brookfield - 22133 Davidson Rd.	16	2.40
3	4/11/15	Saturday	22:47	0.07	False Alarm	2000 Mt. Kisco Dr.	15	1.05
4	4/15/15	Wednesday	19:46	0.12	Alarm of Fire	630 Kurtis Dr.	12	1.44
5	4/22/15	Wednesday	20:49	0.12	Alarm of Fire	14900 Watertown Plank Rd.	14	1.68
6	4/23/15	Thursday	0:06	0.88	False Alarm	Subway - 13402 Watertown Plank Rd.	17	14.96
Department Call Summary and Statistics								
Alarms for the Month	Year to Date Alarms	Last Y.T.D. Alarms	Alarm Difference	Hours Out	Average Hours Per Call	Average Minutes per Call	Members Responded	Members Man Hours
6	35	39	-4	2.2	0.37	22.2	91	36.49
	Year to Date False Alarms	Last Y.T.D. False Alarms	False Alarms Diff.		Year to Date Activity + Alarm Man Hours	Current Membership Roster	Year to Date Responded	Year to Date Man Hours
	8	6	2		1389.70	43	460	306.16
			33%		Monthly Average Response per Alarm	Monthly Average Man Hours per Alarm	YTD Av. Responded per Alarm	YTD Av. Man Hours per Alarm
					15.17	6.08	13.15	8.75
Current Month Calls For Service and Statistics								
No. of Alarms	Types of Alarm this Month		Alarm Times of Occurrence	Year to Date Alarm Times of Occurrence		% of YTD Alarm Times		
2	False Alarm		0	Daytime Alarms 7:00am-3:30pm		8		
2	Alarm of Fire		4	Week Night Alarms 3:30pm-7:00am		17		
1	Vehicle Accident		2	Week End Alarms Sat. 7:00am-Mon. 7:00am		10		
1	Mutual Aid		6	Total Alarms this Month		35		
6	Total Alarms this Month							

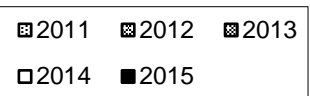
Fire Calls							Avg. Response Time						
M/Yr	2010	2011	2012	2013	2014	2015	M/Yr	2010	2011	2012	2013	2014	2015
J	4	7	8	11	14	8	J	10.25	12.00	6.55	6.46	5.97	8.92
F	7	16	5	7	15	15	F	4.35	5.23	4.87	4.77	8.48	6.30
M	9	9	9	8	4	6	M	6.00	6.20	4.30	5.75	5.45	7.00
A	12	10	11	10	6	6	A	5.85	5.43	6.57	8.53	5.93	6.28
M	8	9	11	14	9		M	5.42	7.15	7.23	5.83	5.91	
J	18	15	10	11	15		J	6.28	4.83	7.50	8.00	6.03	
J	10	10	11	8	19		J	4.92	4.00	5.33	5.72	5.80	
A	8	12	12	10	4		A	5.17	9.12	5.08	8.05	6.15	
S	12	10	9	4	7		S	6.90	4.87	4.07	5.00	6.05	
O	10	5	12	6	15		O	5.20	4.70	5.43	5.14	6.36	
N	12	10	7	9	5		N	4.52	3.35	6.22	6.92	6.00	
D	10	8	15	13	9		D	4.00	5.85	7.40	6.90	5.97	
Total	120	121	120	111	122	35	Total	5.60	5.92	5.99	6.62	6.18	7.12

Average Turnout

M/Yr	2010	2011	2012	2013	2014	2015
J	13.5	14.4	16.6	15.8	11.4	14.0
F	15.1	14.1	13.8	14.9	12.7	11.9
M	15.4	12.2	12.0	14.3	16.3	13.0
A	15.1	14.0	12.2	14.8	13.3	15.2
M	12.9	11.2	15.7	14.5	16.6	
J	11.6	13.7	12.3	11.7	13.4	
J	14.7	11.2	12.2	15.0	11.5	
A	13.8	11.8	13.5	12.0	16.0	
S	13.3	13.7	11.0	15.3	13.6	
O	13.2	11.2	15.7	16.3	14.1	
N	13.4	12.6	18.1	16.0	11.8	
D	13.7	15.3	15.8	12.5	13.7	
Total	13.7	13.0	14.1	14.2	13.7	13.5

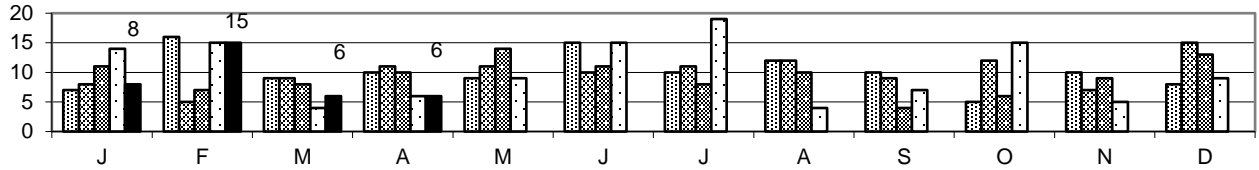
Activity Hours

Activity Hours							Call Hours						
M/Yr	2010	2011	2012	2013	2014	2015	M/Yr	2010	2011	2012	2013	2014	2015
J	345.0	211.0	442.0	300.8	197.4	208.8	J	50.9	62.1	186.4	139.8	70.1	112.4
F	236.8	171.3	356.6	283.6	211.5	255.9	F	51.5	147.5	47.7	56.0	234.5	95.3
M	289.0	415.3	301.5	267.5	230.8	375.6	M	67.0	84.4	61.2	54.6	50.7	62.0
A	213.5	273.8	321.8	292.0	268.7	243.2	A	66.2	266.5	323.9	113.6	63.8	36.5
M	288.3	383.0	312.8	383.8	267.5		M	41.9	91.8	125.7	88.0	52.6	
J	280.0	275.3	234.6	242.0	195.1		J	133.1	134.7	59.6	91.3	105.4	
J	270.8	329.4	278.0	395.2	268.6		J	137.4	70.9	117.4	50.4	167.4	
A	263.8	326.3	239.0	421.8	206.8		A	51.1	175.6	80.7	117.3	28.0	
S	285.6	257.3	370.3	229.6	273.5		S	97.4	48.4	60.7	21.4	70.2	
O	255.3	342.0	414.8	514.4	239.5		O	174.5	19.1	258.0	78.4	147.4	
N	238.9	276.6	152.5	321.4	200.5		N	93.0	54.3	161.8	80.3	48.6	
D	96.8	277.3	328.2	351.9	379.6		D	54.0	57.8	154.9	360.6	21.8	
Total	#####	#####	#####	4003.9	2939.4	1083.5	Total	#####	#####	#####	#####	1060.4	306.2



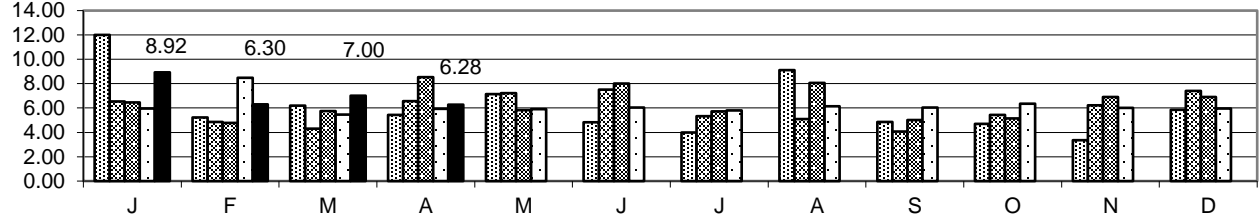
2015 Fire Calls

35 YTD



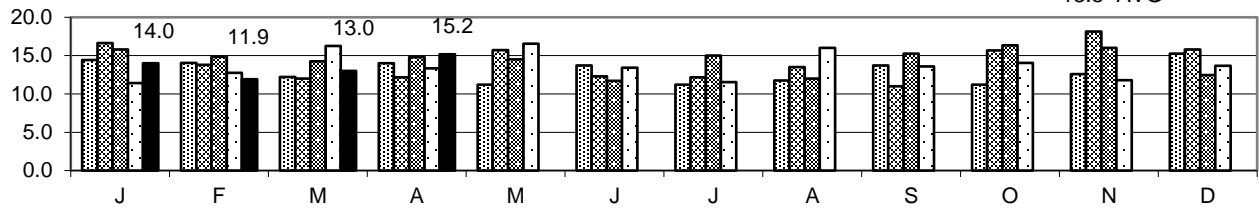
Average Response Time (Minutes)

6.5 Local / 9 Mutual Aid / 7.12 YTD AVG



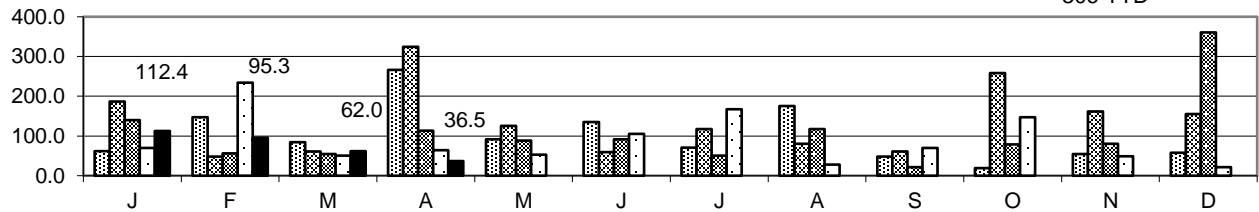
Average Turnout

13.5 AVG



Fire Call Man Hours

306 YTD



Activity Man Hours

1084 YTD

