

## Fire Department Village Board Report Narrative

Month: February 2019

Activities for the Month: The 16 activities for the month included meetings, equipment and station maintenance, records management, work details and trainings.

Training and maintenance:

- Monthly apparatus and equipment maintenance
- Bloodborne Pathogen training
- CPR Heartsaver re-certification
- Fire Attack training at the training house

Activities:

- Station Tour – Girl Scout Troop
- 3 Survive Alive sessions – Tonawanda
- The department positioned 3 units on the Elm Grove Rd. bridge over I-94 for the fallen Milwaukee Police Officer's funeral procession

Calls for Service: There were 5 calls for service comprised of: 2 mutual aid calls with 1 to the City of Brookfield and 1 to the Town of Waukesha, 1 vehicle fire, 1 vehicle accident, and 1 false alarm caused by steam from a burst pipe.

Year to date calls: Calls for service are 8 behind last year, and false alarms are 1 ahead.

Respectfully Submitted,

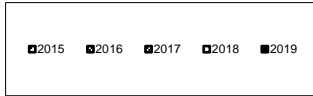
William L. Selzer  
Fire Chief, Elm Grove Volunteer Fire Department

Fire Calls							Avg. Response Time						
M/Yr	2014	2015	2016	2017	2018	2019	M/Yr	2014	2015	2016	2017	2018	2019
J	14	8	12	16	9	10	J	5.97	8.92	6.37	6.35	7.88	6.19
F	15	15	13	7	6	5	F	8.48	6.30	6.87	6.23	6.80	4.20
M	4	6	6	7	10		M	5.45	7.00	6.20	5.80	6.20	
A	6	6	7	11	9		A	5.93	6.28	9.35	6.38	10.40	
M	9	13	12	13	13		M	5.91	7.05	6.53	6.85	6.51	
J	15	16	14	18	10		J	6.03	5.92	6.52	6.45	4.70	
J	19	17	22	9	21		J	5.80	5.90	9.06	6.50	6.17	
A	4	15	9	2	11		A	6.15	6.17	7.37	5.67	10.27	
S	7	14	7	7	12		S	6.05	7.38	6.34	5.00	4.57	
O	15	7	11	8	8		O	6.36	6.50	7.07	5.23	3.36	
N	5	13	14	6	7		N	6.00	6.28	6.10	5.14	7.25	
D	9	14	10	11	11		D	5.97	6.32	8.42	7.85	6.00	
Total	122	144	137	115	127	15	Total	6.30	6.55	7.18	6.12	6.68	5.20

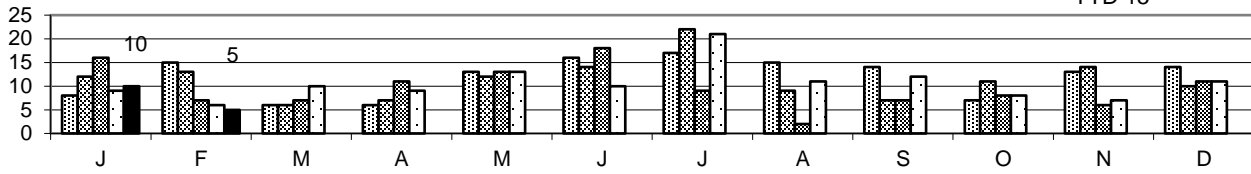
Average Turnout						
M/Yr	2014	2015	2016	2017	2018	2019
J	11.4	14.0	12.4	13.9	11.0	13.0
F	12.7	11.9	13.4	13.4	14.5	12.0
M	16.3	13.0	13.2	13.1	13.9	
A	13.3	15.2	13.0	11.4	12.6	
M	16.6	13.4	12.5	11.2	14.0	
J	13.4	12.9	11.4	11.2	11.1	
J	11.5	13.2	12.9	9.1	11.1	
A	16.0	13.8	13.1	10.5	12.0	
S	13.6	12.9	13.0	12.1	11.0	
O	14.1	9.9	12.8	12.4	11.4	
N	11.8	13.2	12.1	11.7	10.9	
D	13.7	12.6	12.6	12.7	13.6	
Total	13.3	13.0	12.7	11.9	12.3	12.5

Activity Hours							Call Hours						
M/Yr	2014	2015	2016	2017	2018	2019	M/Yr	2014	2015	2016	2017	2018	2019
J	197.4	208.8	248.7	272.3	189.3	135.9	J	70.1	112.4	91.7	187.0	92.2	205.9
F	211.5	255.9	205.4	223.6	171.2	287.3	F	234.5	95.3	81.6	45.3	48.9	41.9
M	230.8	375.6	261.5	187.2	204.2		M	50.7	62.0	61.4	34.9	64.0	
A	268.7	243.2	195.5	199.4	344.3		A	63.8	36.5	100.1	142.8	127.4	
M	267.5	340.7	344.2	342.9	245.8		M	52.6	136.7	126.2	89.5	115.9	
J	195.1	411.2	156.0	183.4	168.8		J	105.4	110.0	100.7	150.1	57.4	
J	268.6	302.9	238.6	171.2	207.7		J	167.4	186.8	201.3	67.5	231.3	
A	206.8	195.6	467.8	315.3	168.4		A	28.0	142.6	77.1	16.7	56.7	
S	273.5	253.2	154.1	179.4	169.2		S	70.2	136.9	36.8	24.8	87.9	
O	239.5	220.7	267.2	282.8	525.0		O	147.4	36.0	122.0	42.0	119.8	
N	200.5	236.7	449.3	181.4	256.8		N	48.6	103.1	90.7	55.1	35.4	
D	379.6	355.3	210.8	179.1	135.9		D	21.8	99.0	138.5	90.7	205.9	
Total	2939.4	3399.7	3199.2	2717.8	2786.6	423.2	Total	1060.4	1257.2	1228.0	946.3	1242.6	247.8

### 2019 Fire Calls

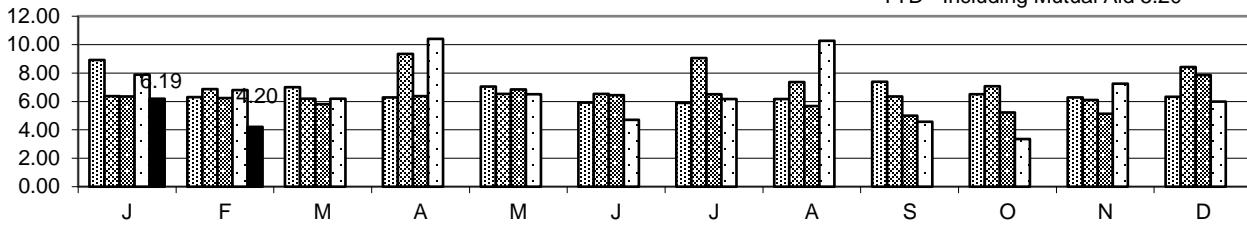


YTD 15



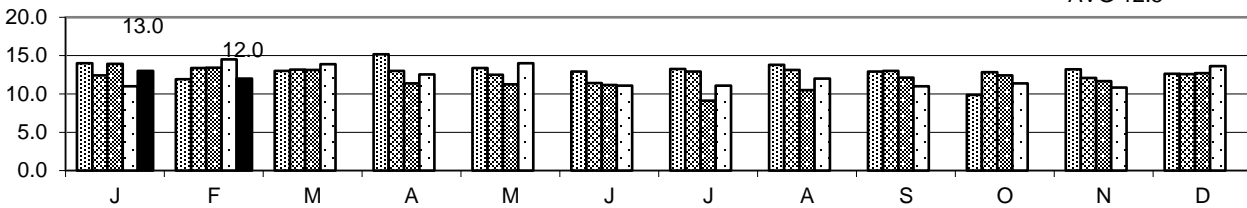
### Average Response Time (Minutes)

YTD - Including Mutual Aid 5.20



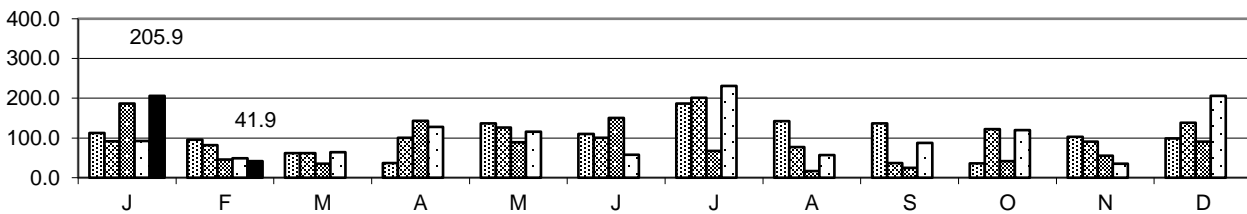
### Average Turnout

AVG 12.5



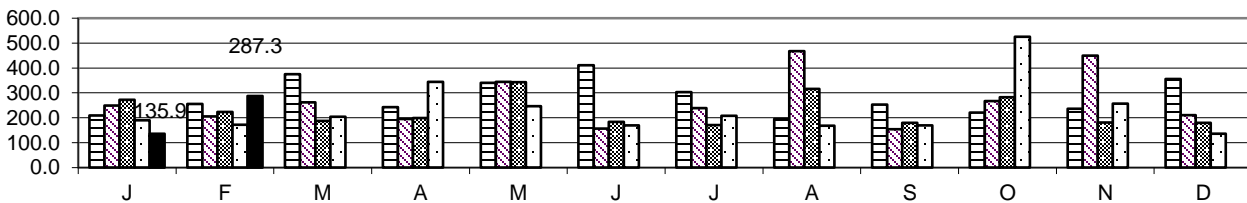
### Fire Call Man Hours

YTD 247.8



### Activity Man Hours

YTD 423.2



Elm Grove Fire Department Activities for Month							Month:	Feb-19
Activity No.	Activity Date	Day of the Week	Activity Time	Activity Hours	Type of Activity	Description of Activity	Members Attended	Man Hours
1	2/3/19	Sunday	19:00	1.0	Data Management	Firehouse Reports	1	1.00
2	2/5/19	Tuesday	10:45	1.0	Data Management	Monthly Reports	1	1.00
3	2/5/19	Tuesday	19:00	0.5	Training	Bloodborne Pathogens	24	12.00
4	2/5/19	Tuesday	19:30	2.5	Training	Heartsaver CPR Recertification	17	42.50
5	2/12/19	Tuesday	19:00	3.0	Training	Fire Attack/ Search & Rescue	15	45.00
6	2/13/19	Wednesday	14:30	4.0	Public Relations	MPD Funeral Procession	11	44.00
7	2/17/19	Sunday	8:15	0.8	Equipment Maintenance	Equipment Maintenance	1	0.75
8	2/18/19	Monday	14:00	0.8	Public Education	Survive Alive - Tonawanda School Visit	1	0.75
9	2/18/19	Monday	15:00	2.0	Training Prep	Training House Prep - 1820 Fairhaven	1	2.00
10	2/19/19	Tuesday	19:00	3.0	Training	Fire Attack/ Search & Rescue	19	57.00
11	3/20/19	Wednesday	8:30	2.5	Public Education	Survive Alive @ City of Brookfield - Tonawanda - 1	2	5.00
12	2/20/19	Wednesday	15:45	1.8	Public Education	Station Tour - Girl Scout Troop	1	1.75
13	2/21/19	Thursday	8:30	2.5	Public Education	Survive Alive @ City of Brookfield - Tonawanda - 2	2	5.00
14	2/22/19	Friday	8:30	2.5	Public Education	Survive Alive @ City of Brookfield - Tonawanda - 3	2	5.00
15	2/23/19	Saturday	10:00	2.3	Training	Fire Attack/ Search & Rescue	10	22.50
16	2/25/19	Monday	8:00	3.5	Training	Bloodborne Pathogens & CPR	12	42.00
<b>Total Activity Man Hours for the Month</b>								287.25
<b>Department Activity Summary and Statistics</b>								
Monthly	Year to Date	Month Act.	Av. Hours	Year to Date		Monthly Activity	Year to Date	Year to Date
Activities	Activities	Hours	per Activity	Activity Hours		Attendance	Attendance	Man Hours
16	29	33.5	2.09	52.2		120	187	380.90
<b>Elm Grove Fire Department Calls for Service for Month</b>								
Call No.	Date of Call	Day of Week	Time of Call	Hours Out	Type of Alarm	Alarm Description and Incident Address	Members Responded	Members Man Hours
1	2/5/19	Tuesday	5:59	0.6	False Alarm	13105 Watertown Plank Rd	12	7.20
2	2/8/19	Friday	15:54	0.20	Motor Vehicle Fire	Bluemound/Moorland	14	2.80
3	2/19/19	Tuesday	3:25	2.10	Mutual Aid	Town of Waukesha - S15 W22412 Arcadian	12	25.20
4	2/20/19	Wednesday	11:03	0.40	Motor Vehicle Crash	600 blk Pilgrim Parkway	13	5.20
5	2/23/19	Saturday	9:25	0.10	Mutual Aid	12400 blk I94 WB	15	1.50
<b>Department Call Summary and Statistics</b>								
Alarms for the Month	Year to Date Alarms	Last Y.T.D. Alarms	Alarm Difference	Hours Out	Average Hours Per Call	Average Minutes per Call	Members Responded	Members Man Hours
5	15	23	-8	3.4	0.68	40.8	66	41.90
	Year to Date False Alarms	Last Y.T.D. False Alarms	False Alarms Diff.		Year to Date Activity + Alarm Man Hours	Current Membership Roster	Year to Date Responded	Year to Date Man Hours
	4	3	1		598.40	40	242	217.50
			33%					
					Monthly Average Response per Alarm	Monthly Average Man Hours per Alarm	YTD Av. Responded per Alarm	YTD Av. Man Hours per Alarm
					13.20	8.38	16.11	14.50
<b>Current Month Calls For Service and Statistics</b>								
No. of Alarms	Types of Alarm this Month		Alarm Times of Occurrence		Year to Date Alarm Times of Occurrence		% of YTD Alarm Times	
2	Mutual Aid		1 Daytime Alarms 7:00am-3:30pm		5		33.3%	
1	False Alarm		3 Week Night Alarms 3:30pm-7:00am		6		40.0%	
1	Motor Vehicle Crash		1 Week End Alarms Sat. 7:00am-Mon. 7:00am		4		26.7%	
1	Motor Vehicle Fire		5 Total Alarms this Month		15		100%	
5	Total Alarms this Month							