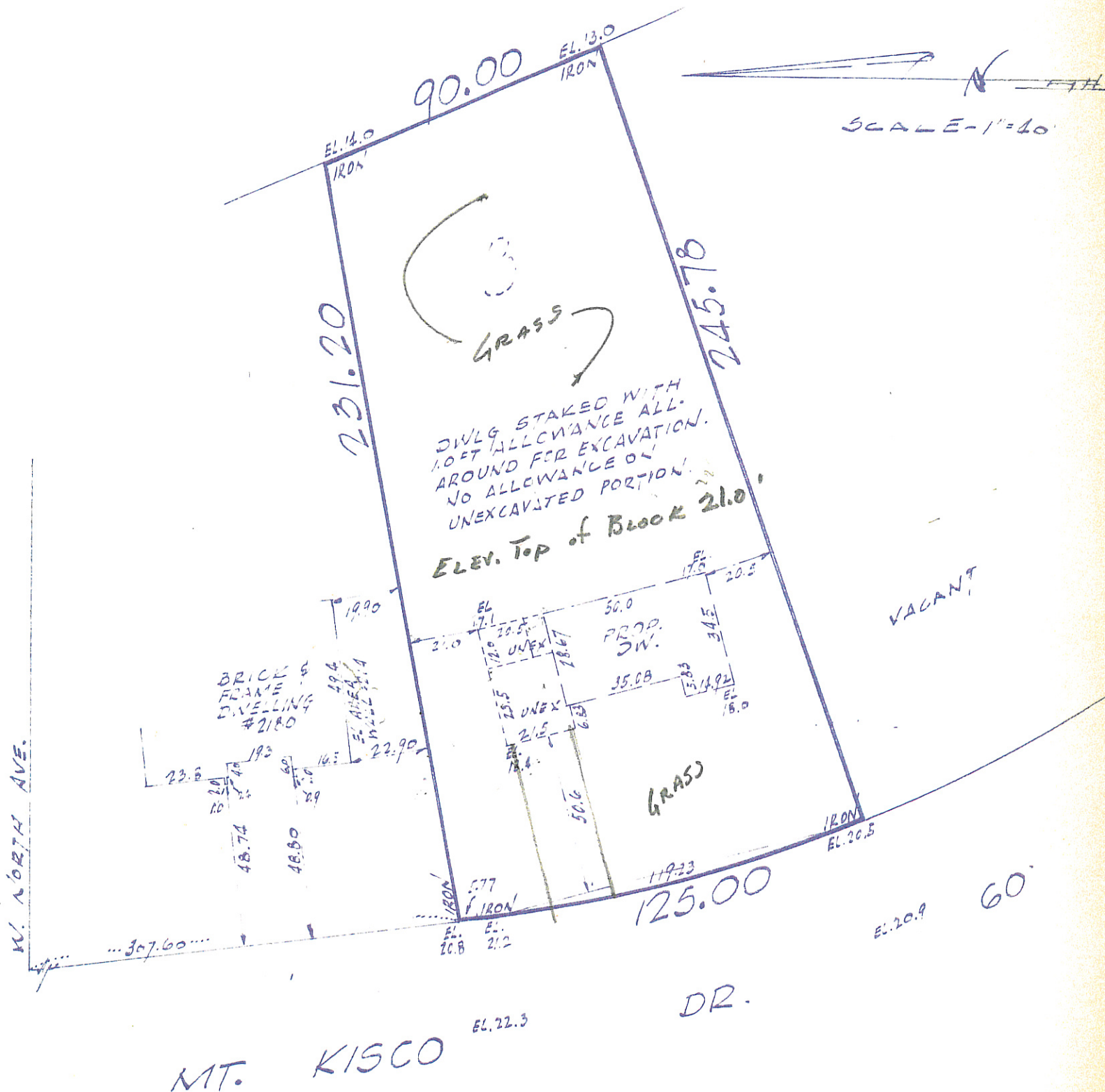


# Plat of Survey

Known as Mt Kisco Drive, in the Village of Elm Grove, Wisconsin.  
 Lot 3 in Block 2 in SARATOGA ESTATES, being a Subdivision of a part of the N W 1/4  
 and the N E 1/4 of the N E 1/4 of Section 23, T 7 N, R 20 E, in the Village of Elm  
 Grove, Waukesha County, Wisconsin  
 August 15, 1963

Survey No. 105060-S



We Certify that we have surveyed the above described property and that the above plat is an accurate survey and a true representation thereof and correctly shows the exterior boundary lines and location of buildings and other improvements on said property and the correct measurements thereof.

NATIONAL SURVEY SERVICE  
 CIVIL ENGINEERS AND SURVEYORS  
 5729 W. VLIET ST. BLUEMOUND 8 9830  
 MILWAUKEE 8, WISCONSIN



Kenneth E. Berke  
 SURVEYOR

