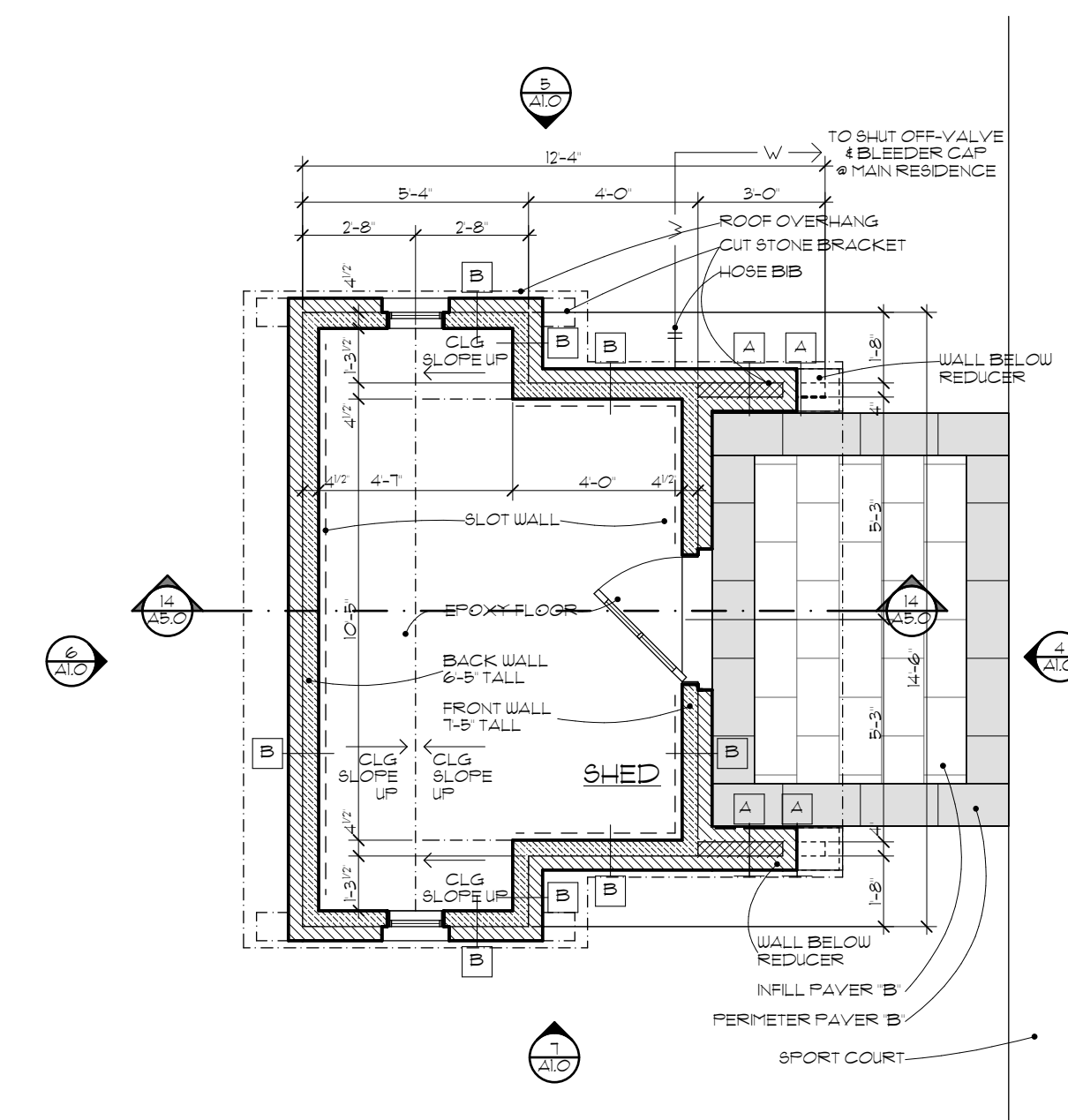
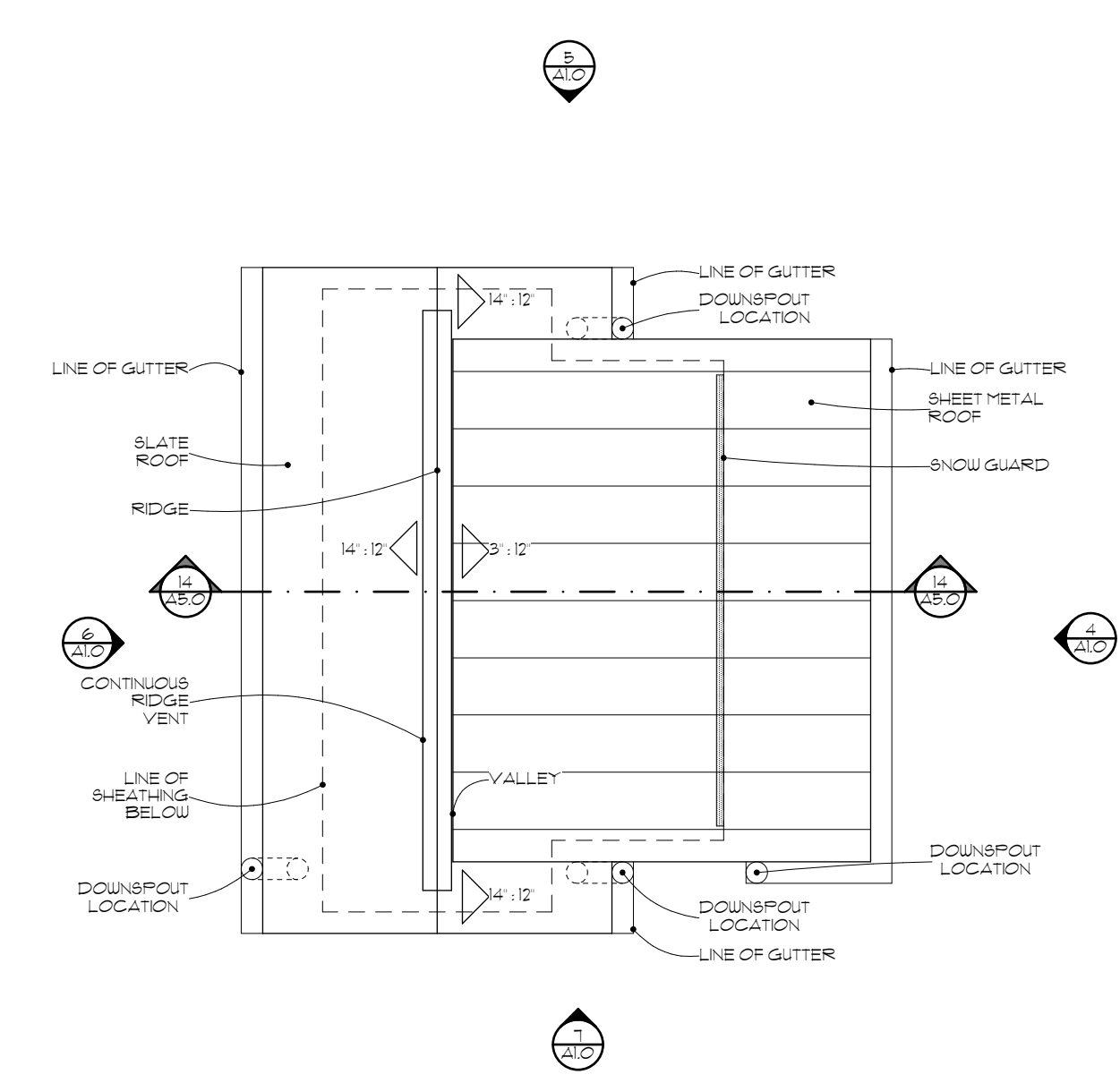


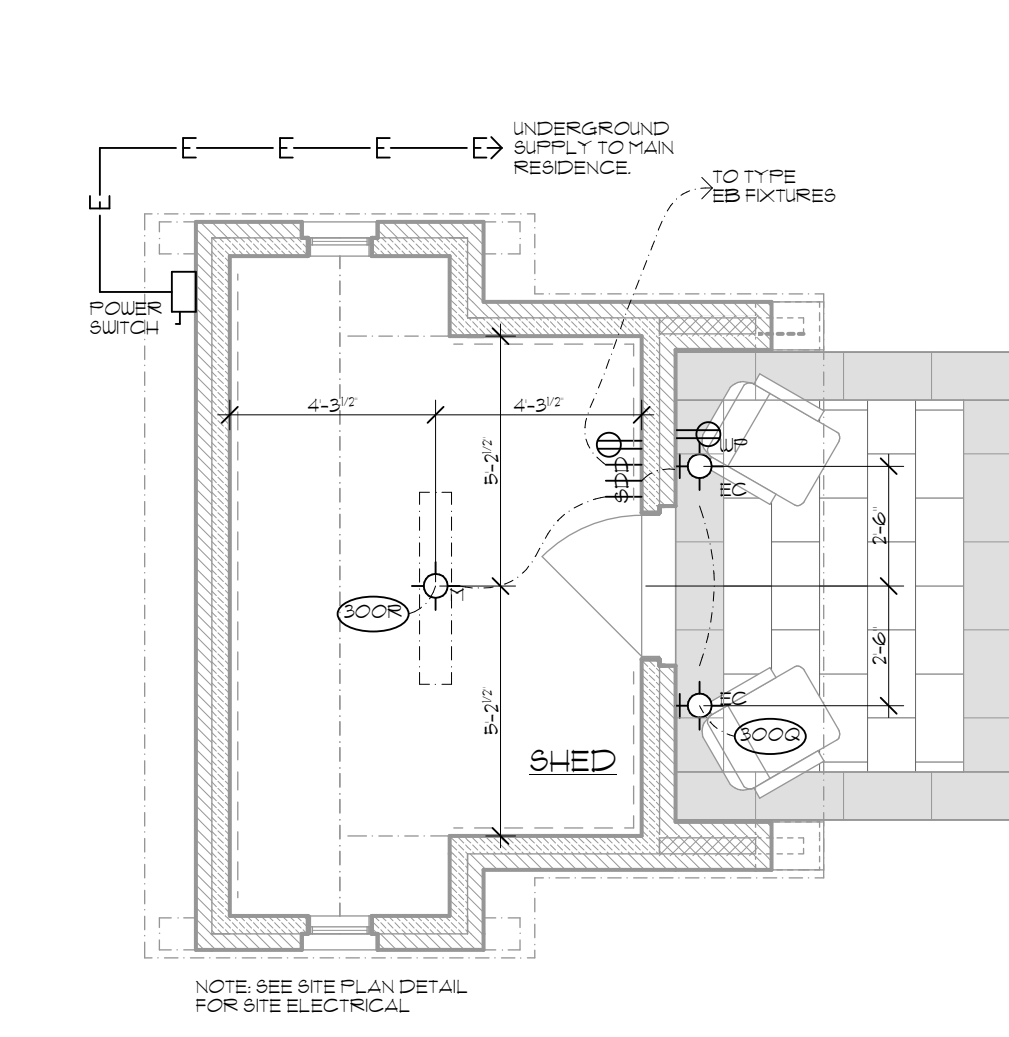
NOTE:  
ALTHOUGH EVERY EFFORT HAS BEEN MADE IN PREPARING THESE CONTRACT DOCUMENTS AND CHECKING THEM FOR ACCURACY, THE CONTRACTORS MUST CHECK ALL DETAILS AND DIMENSIONS AND BE RESPONSIBLE FOR SAME. THE CONTRACTORS SHALL BE RESPONSIBLE FOR MAKING SURE THAT ALL WORK IS DONE IN ACCORDANCE WITH ALL STATE AND LOCAL CODES. THE CONTRACT DOCUMENTS UTILIZE A PROCESS CALLED FREE DESIGN OR DESIGN/BUILD FOR ROOF, WINDOW, PLUMBING, ELECTRICAL, HVAC DETAILS, AND AS DESIGNATED IN THE SPECIFICATION AS TO BE COMPLETED ON A DESIGN/BUILD BASIS. THIS MEANS THAT THE CONTRACT DOCUMENTS DO NOT INCLUDE ALL REQUIRED DETAILS, AND THAT THE CONTRACTORS SHALL USING THEIR OWN STAFF OR QUALIFIED SUBCONTRACTORS, DESIGN AND BUILD THE FREE DESIGN AND DESIGN/BUILD PORTIONS OF THE WORK. THE CLIENT IS DIRECTLY CONTRACTING WITH THE CONTRACTORS AND THEREFORE THE CLIENT AND THE CONTRACTORS ARE ASSUMING THE DESIGN AND BUILD RESPONSIBILITY FOR THE FREE DESIGN AND DESIGN/BUILD PORTIONS OF THE PROJECT. DEEP RIVER PARTNERS, LTD. IS NOT RESPONSIBLE FOR INSPECTING ANY ASPECT OF THE CONTRACTORS WORK OR FOR OBSERVATION OF THE CONTRACTORS WORK FOR COMPLIANCE WITH THE CONTRACT DOCUMENTS.



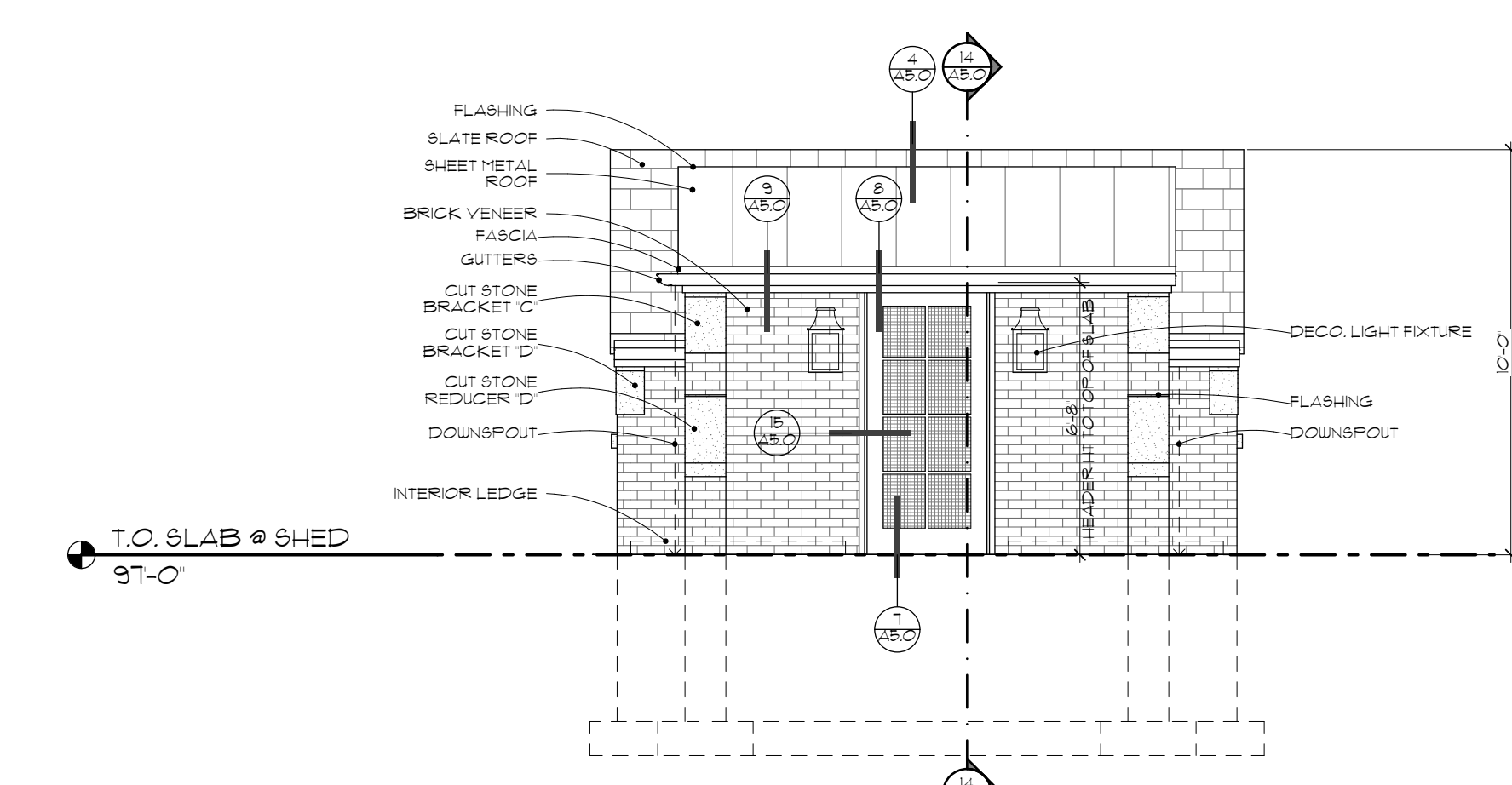
1 FIRST FLOOR PLAN  
SCALE 1/4" = 1'-0"



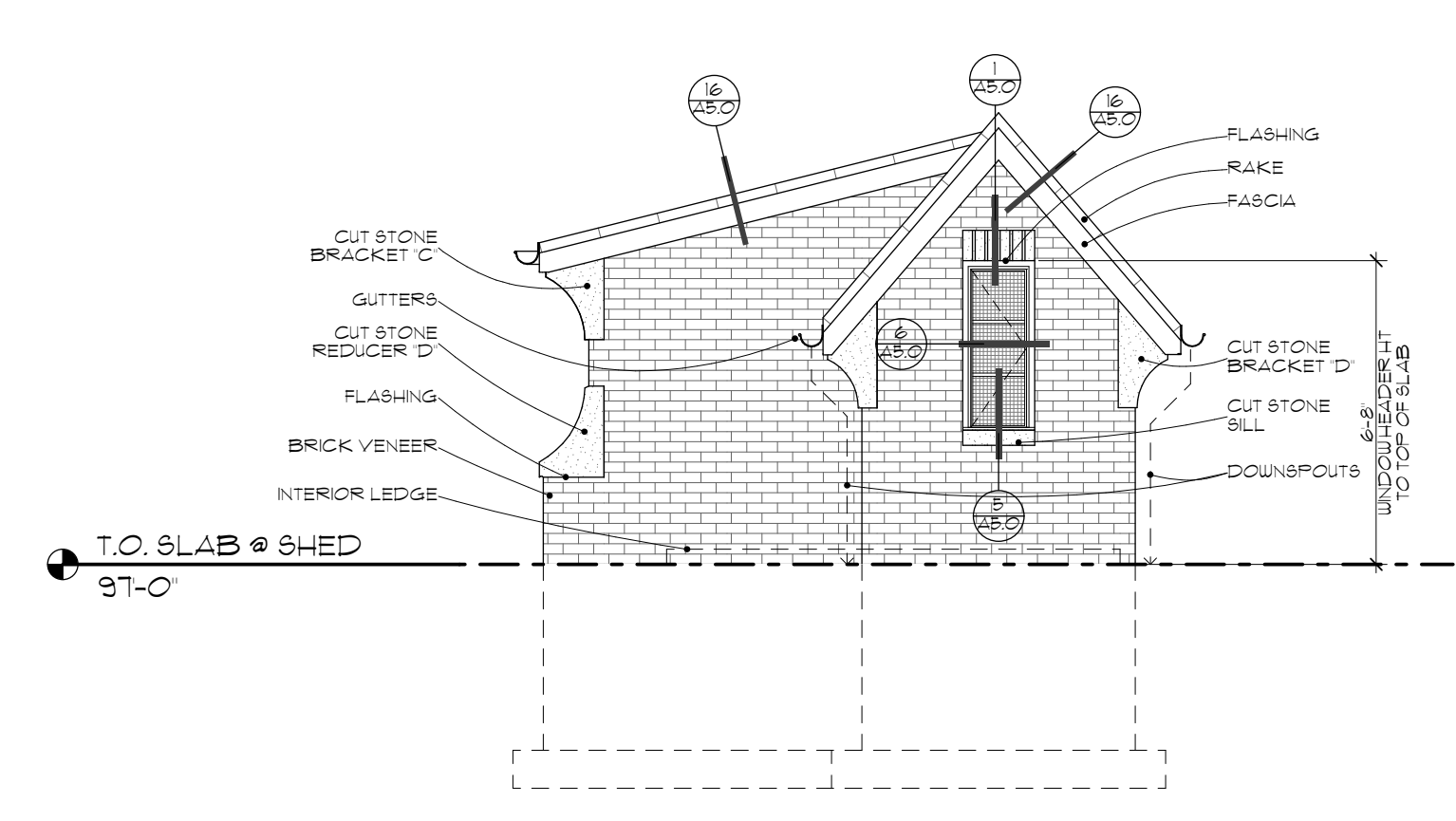
2 ROOF PLAN  
SCALE 1/4" = 1'-0"



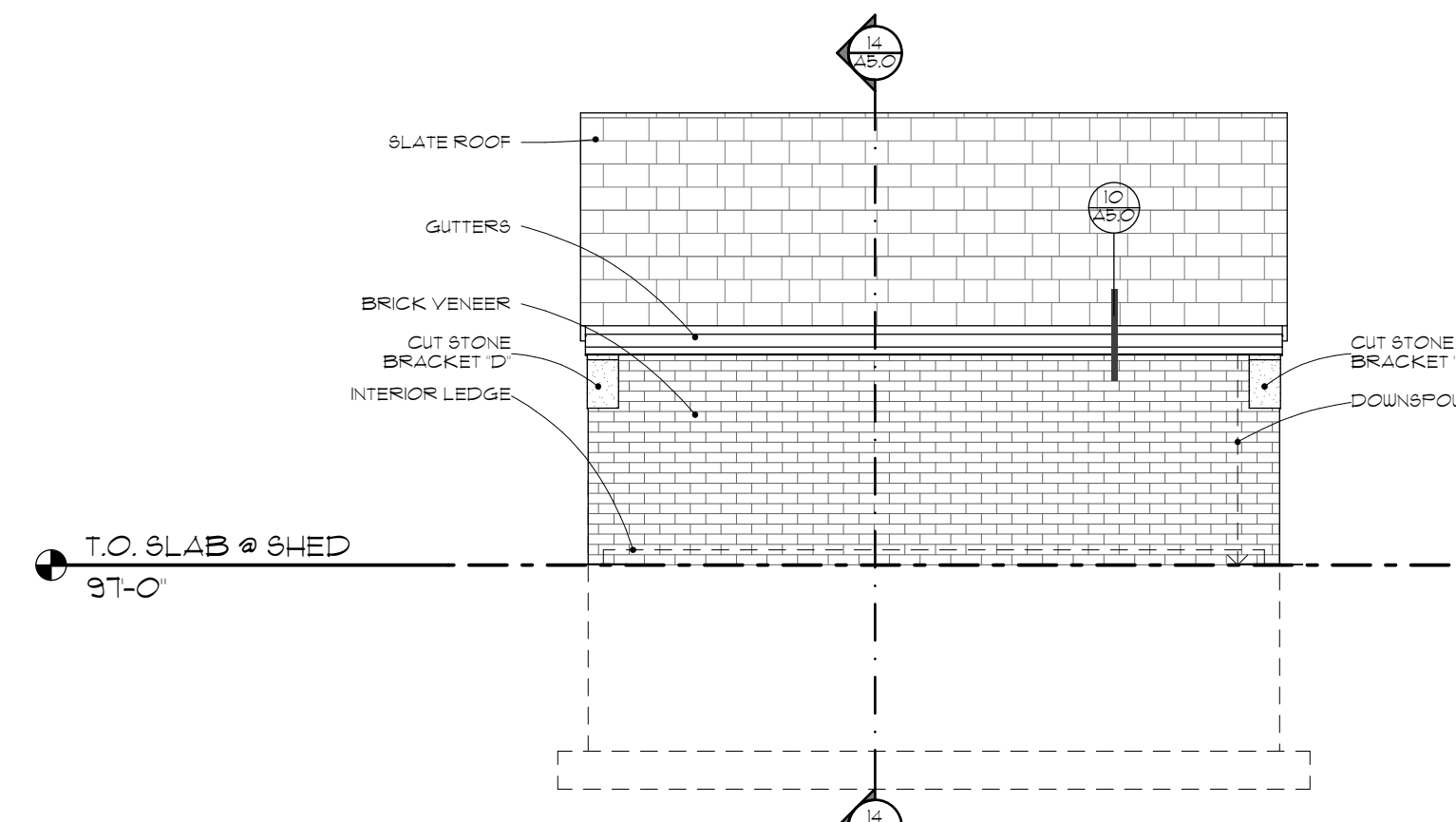
3 ELECTRICAL PLAN  
SCALE 1/4" = 1'-0"



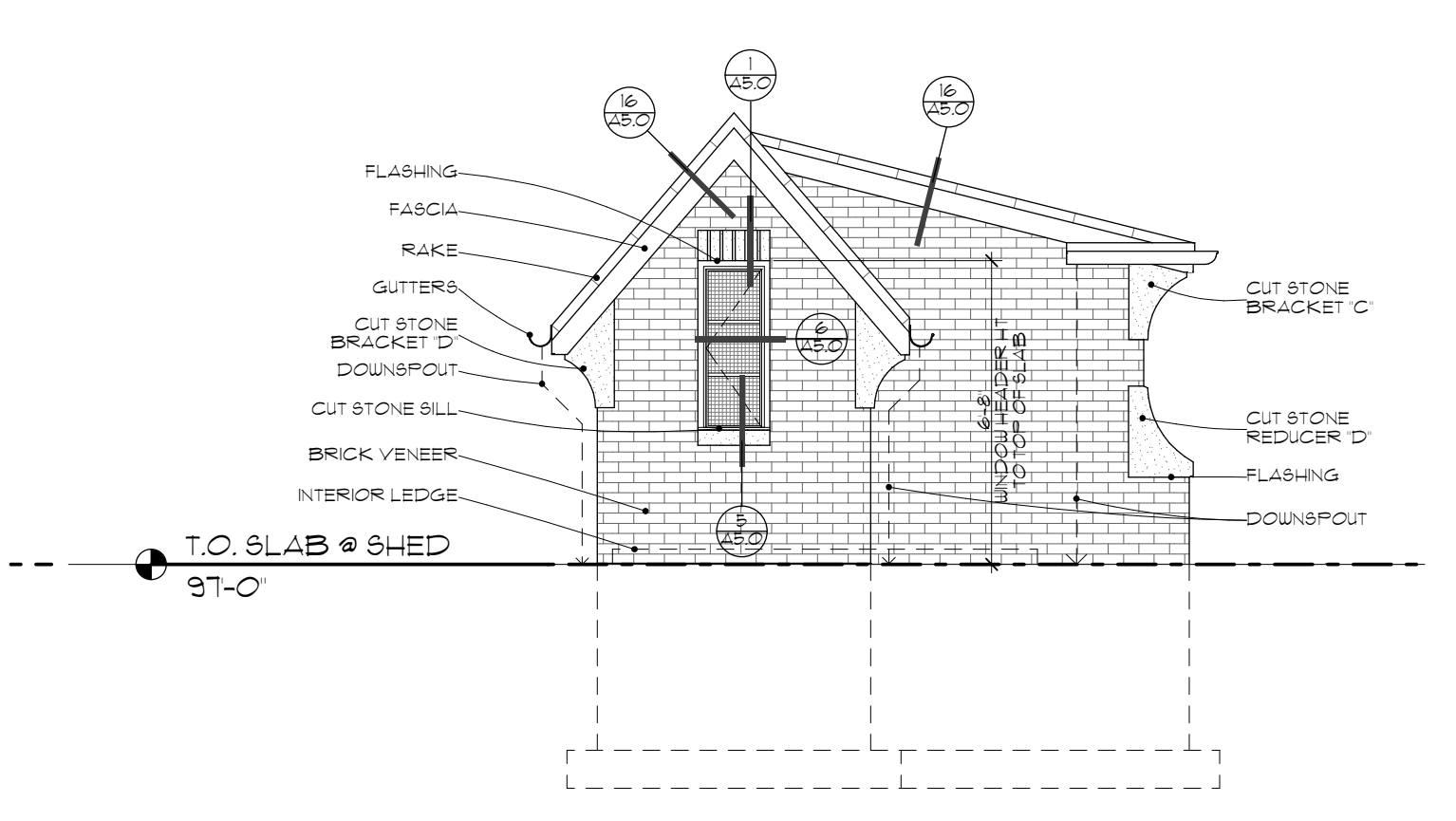
4 ELEVATION  
SCALE 1/4" = 1'-0"



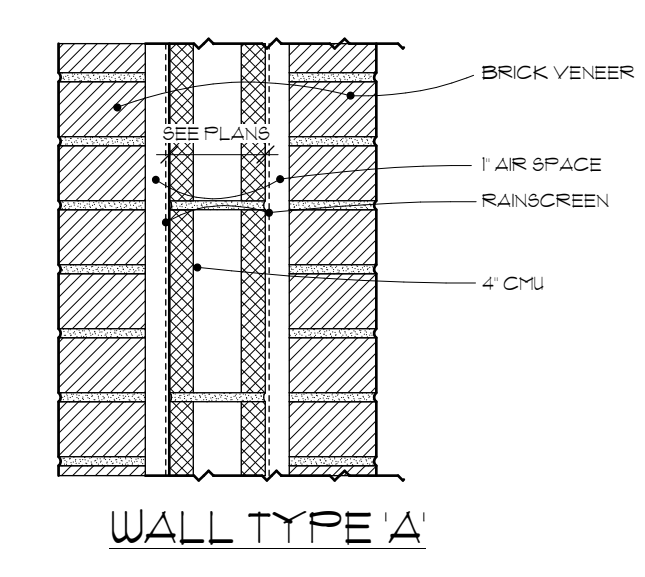
5 ELEVATION  
SCALE 1/4" = 1'-0"



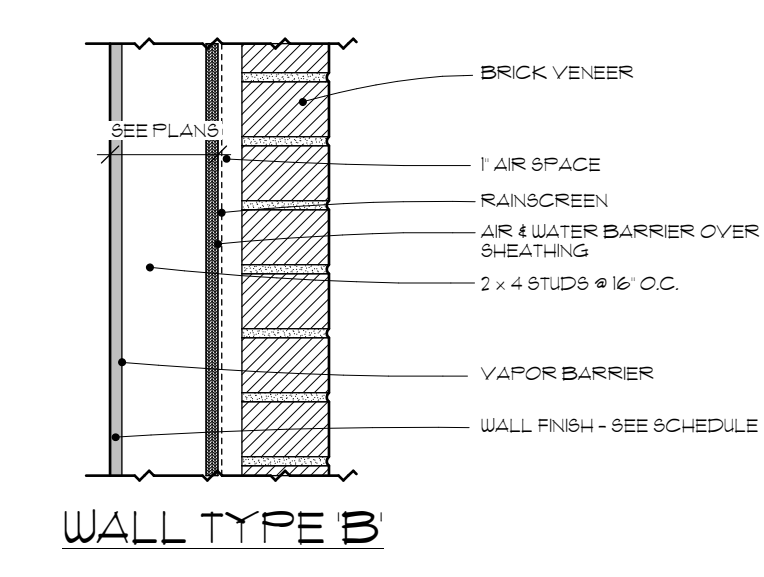
6 ELEVATION  
SCALE 1/4" = 1'-0"



7 ELEVATION  
SCALE 1/4" = 1'-0"



WALL TYPE A



WALL TYPE B

8 WALL TYPES  
SCALE 1/2" = 1'-0"

### ELECTRICAL KEY

- LIGHT FIXTURE
  - SURFACE CEILING LIGHT
  - SURFACE WALL LIGHT
  - SURFACE GROUND LIGHT
  - CIRCUITRY
  - SINGLE POLE SWITCH
  - DIMMER SWITCH SINGLE POLE
  - LIGHT LOAD \* NO BE
  - SWITCH IS NOT INDICATED.
  - POWER
  - DUPLEX RECEPTACLE
  - WEATHER RATED DUPLEX RECEPTACLE PROTECTED WEATHERPROOF BOX and/or BEB.
- NOTES:
1. SEE MECHANICAL SHEETS FOR EQUIPMENT POWER REQUIREMENTS.
  2. SEE ARCHITECTURAL SHEETS FOR ELECTRICAL PENETRATIONS AT CASWORK AND LIGHT COVERS.
  3. SEE ELECTRICAL SCHEDULE FOR POWER WIRE HEIGHTS.
  4. ANGLE LETTER DESIGNATIONS INDICATE RECESSED MOUNTING FIXTURES AND SPECIAL EFFECT FIXTURES. DOUBLE LETTER DESIGNATIONS INDICATE SURFACE MOUNTED DECORATIVE FIXTURES.
  5. SEE SCHEDULES FOR POWER REQUIREMENTS.
  6. ALL NOTATIONS DIMENSIONS ARE TO CENTERLINE OF ABOVE UNLESS NOTED OTHERWISE.
  7. ELECTRICAL KEY SYMBOLS ARE GENERAL LOCATIONS TO LOCATE POWER SUPPLY & REMOTE TRANSFORMERS FOR LIGHT FIXTURES THAT REQUIRE THEM.
  8. WALL SWITCHES AT BEDSIDES TO BE 30" AFF. ALL OTHER WALL SWITCHES TO BE 48" AFF. UNLESS NOTED OTHERWISE.
  9. WALL OUTLETS AT COUNTERTOPS TO BE 48" AFF. ALL OTHER WALL OUTLETS TO BE 17" AFF. UNLESS NOTED OTHERWISE.

Project #2132  
JUNEAU REAR YARD  
14265 JUNEAU BLVD  
ELM GROVE, WI 53122

DESCRIPTION	DATE
BID ISSUE	12.21.2021

### SHED PLANS AND ELEVATIONS

