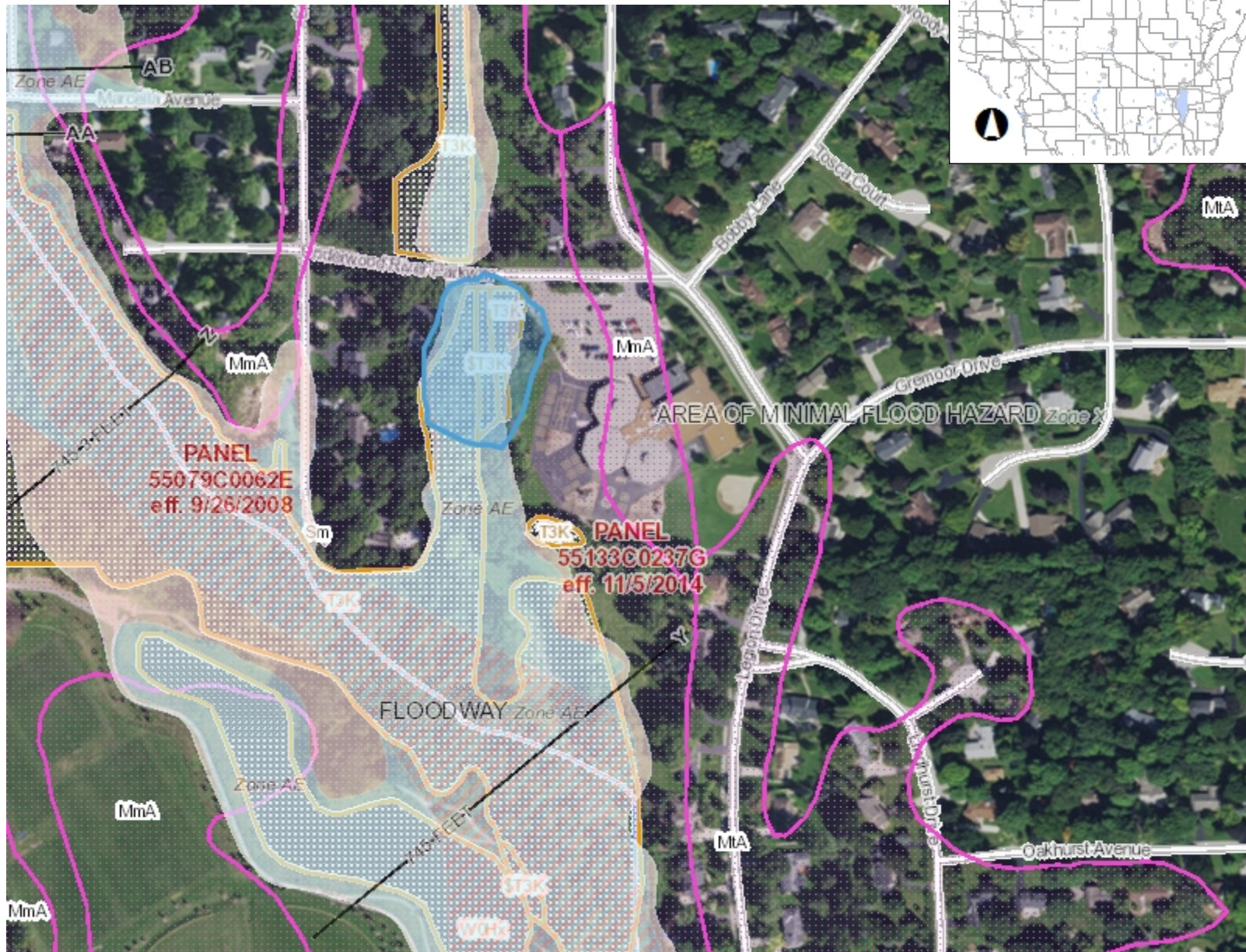




Underwood Creek Floodplain Restoration Project



Legend

- FIRM Panels
- Cross-Sections
- Flood Hazard Boundaries**
 - Other Boundaries
 - Limit Lines
 - SFHA / Flood Zone Boundary
- Flood Hazard Zones**
 - 1% Annual Chance Flood Hazard
 - Regulatory Floodway
 - Special Floodway
 - Area of Undetermined Flood Hazard
 - 0.2% Annual Chance Flood Hazard
 - Future Conditions 1% Annual Chance Flood Hazard
 - Area with Reduced Risk Due to Levee
- Wetland Class Points**
 - Dammed pond
 - Excavated pond
 - Filled excavated pond
 - Filled/draind wetland
 - Wetland too small to delineate
- Filled Points
- Wetland Class Areas**
 - Wetland
 - Upland
- Filled Areas
- NRCS Wetspots
- Wetland Indicators
- Intermittent Streams**
- 24K Hydrography Streams and Rivers
- 24K Hydrography Lakes and Open Water
- Municipality

0.1 0 0.06 0.1 Miles

NAD_1983_HARN_Wisconsin_TM

1: 3,960

DISCLAIMER: The information shown on these maps has been obtained from various sources, and are of varying age, reliability and resolution. These maps are not intended to be used for navigation, nor are these maps an authoritative source of information about legal land ownership or public access. No warranty, expressed or implied, is made regarding accuracy, applicability for a particular use, completeness, or legality of the information depicted on this map. For more information, see the DNR Legal Notices web page: <http://dnr.wi.gov/legal/>

Notes

The Blue shape is the approximate location of the floodplain restoration and stormwater infiltration project.